

# Prepositions and directions

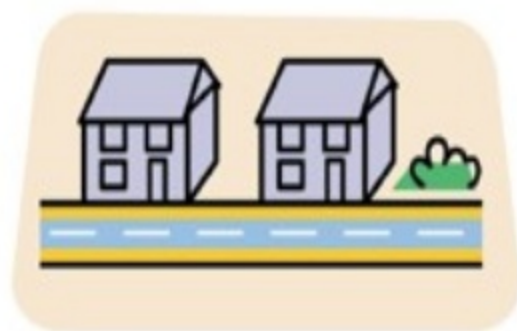
On



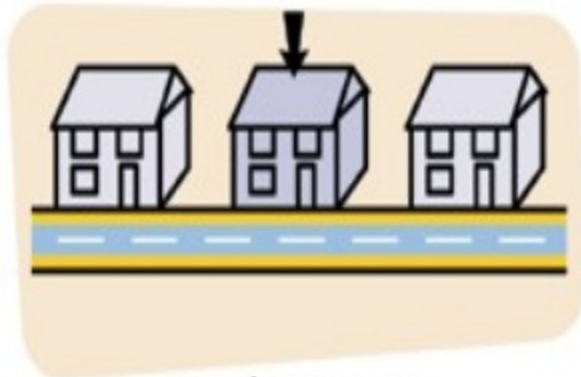
across from



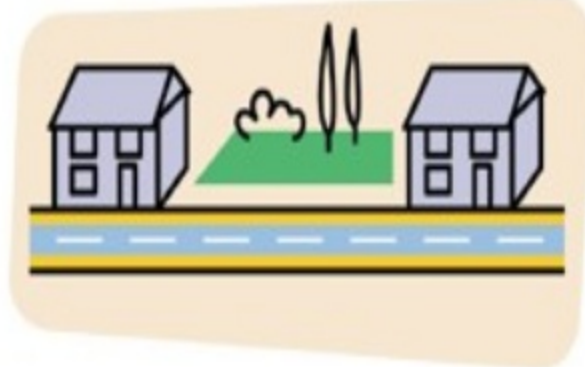
next to



Behind

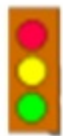


between



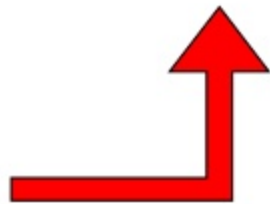
near

# Asking for and giving directions

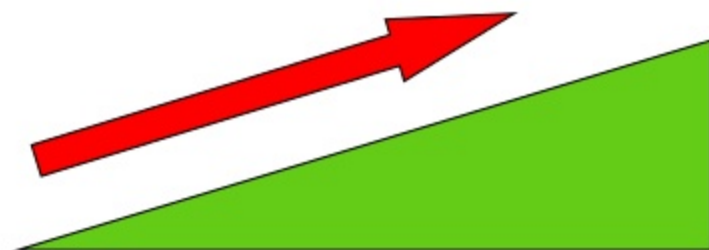
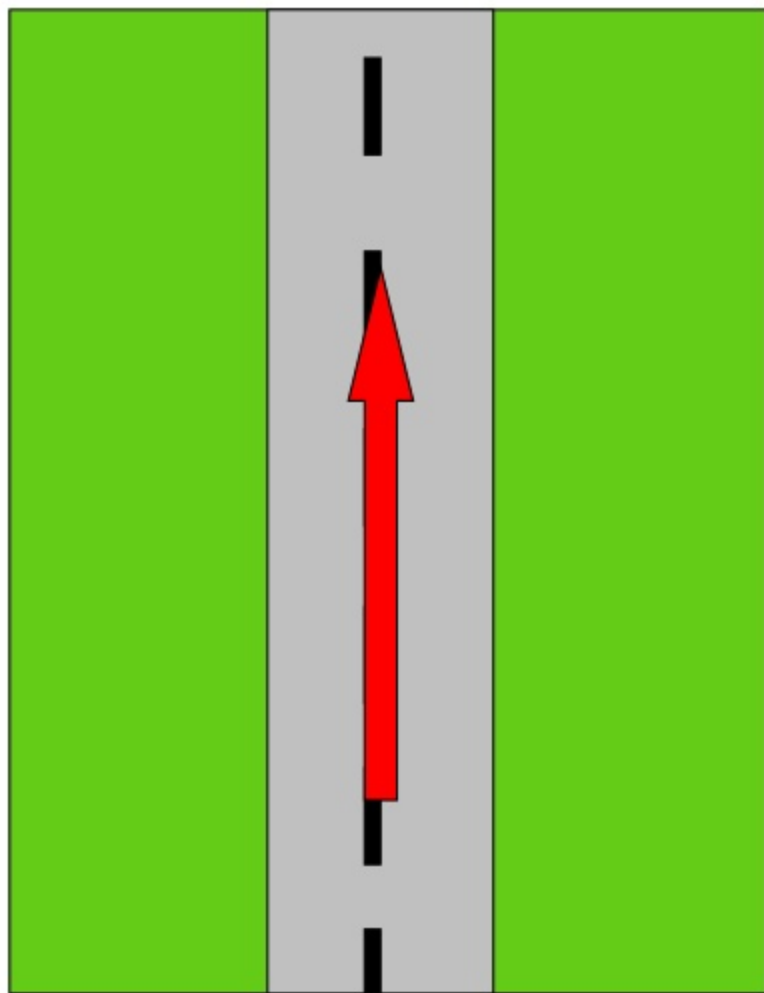


How can I get to....?

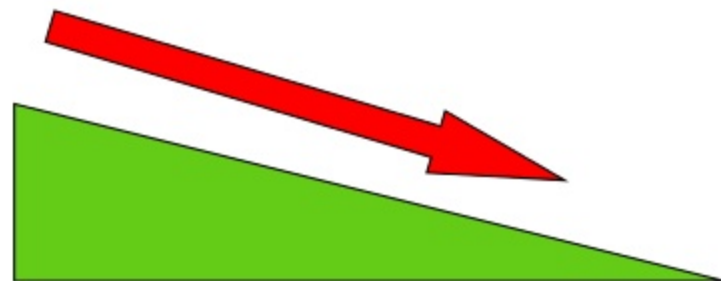
Where is the .....?



**Go along**  
**Go on / ahead**  
**Go straight on** } the street



**Go up** the street

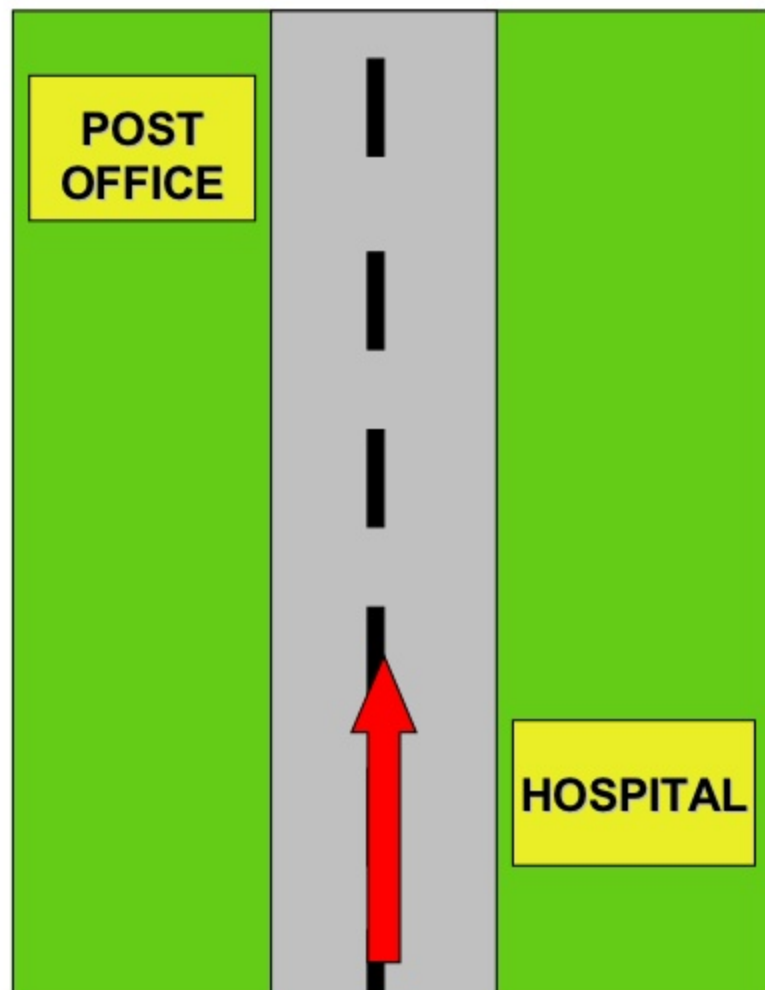


**Go down** the street

**Go past**

**Pass by**

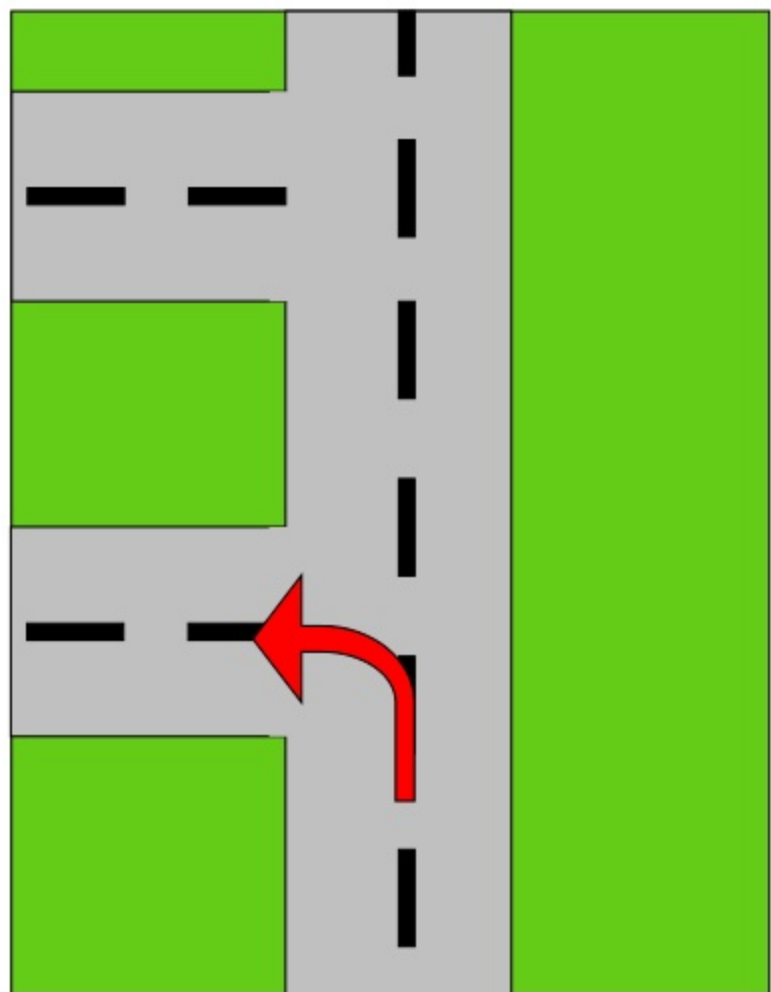
the Hospital



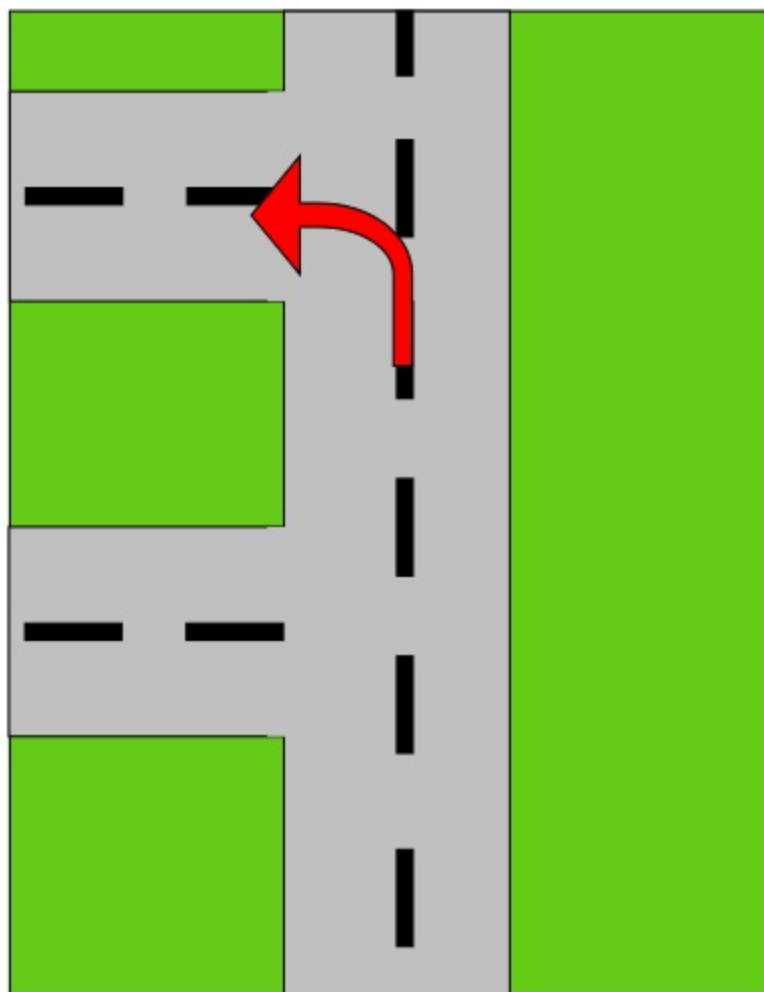
The hospital is on your right

The Post Office is on your left

# Turn Left

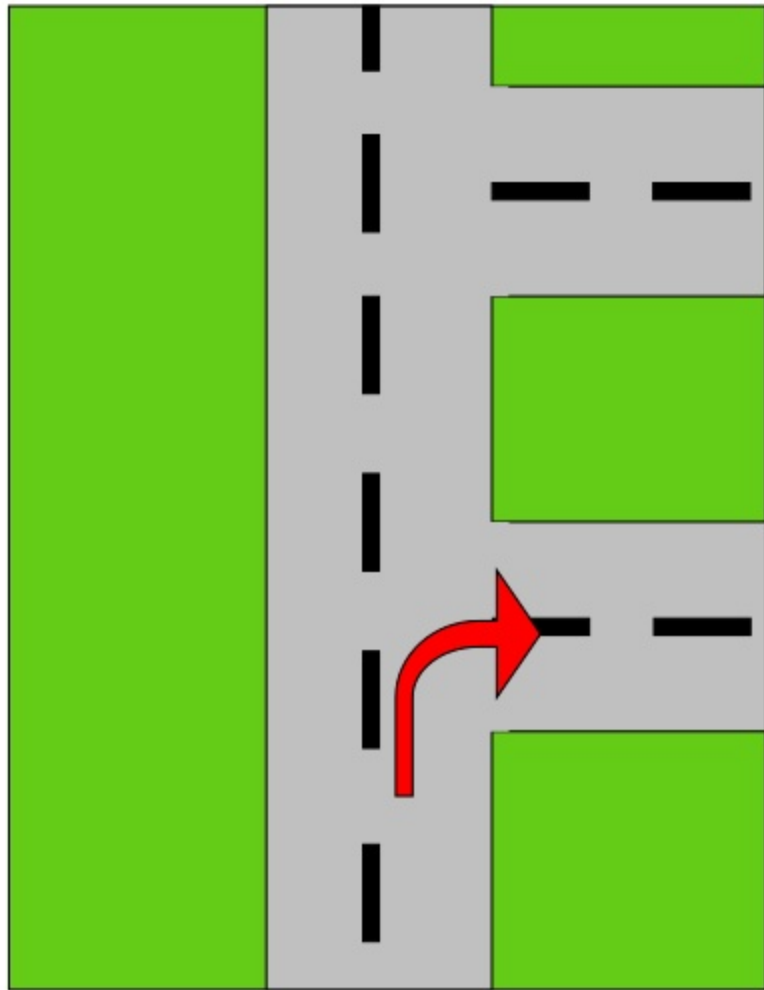


**Take the first  
corner on the left**

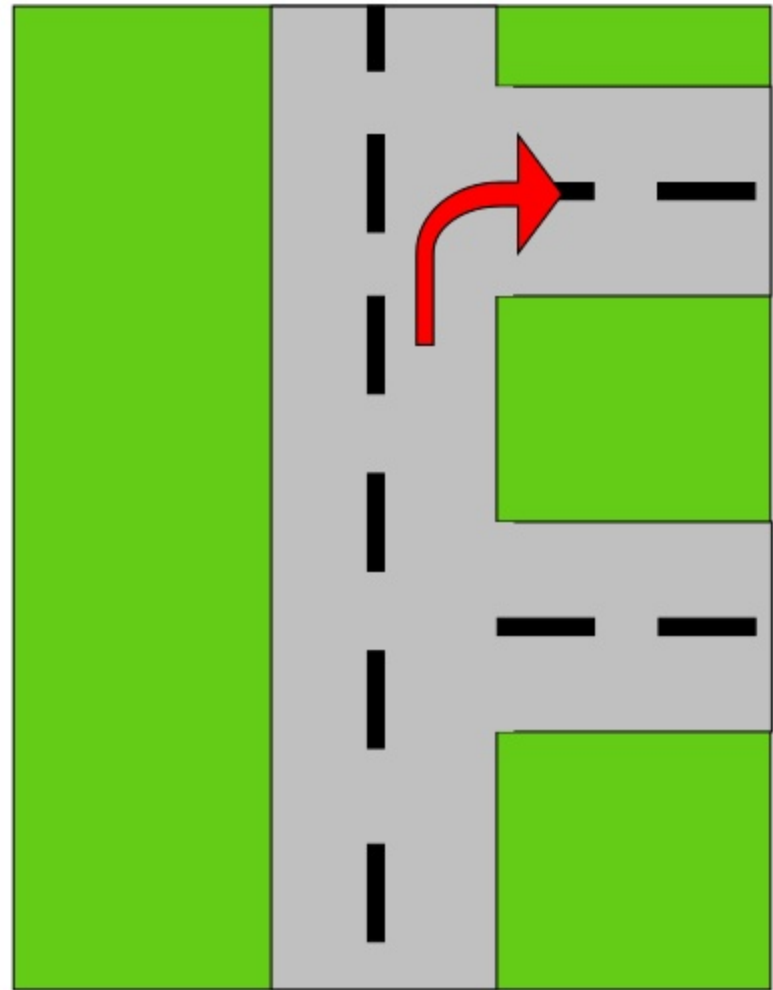


**Take the second  
corner on the left**

# Turn Right

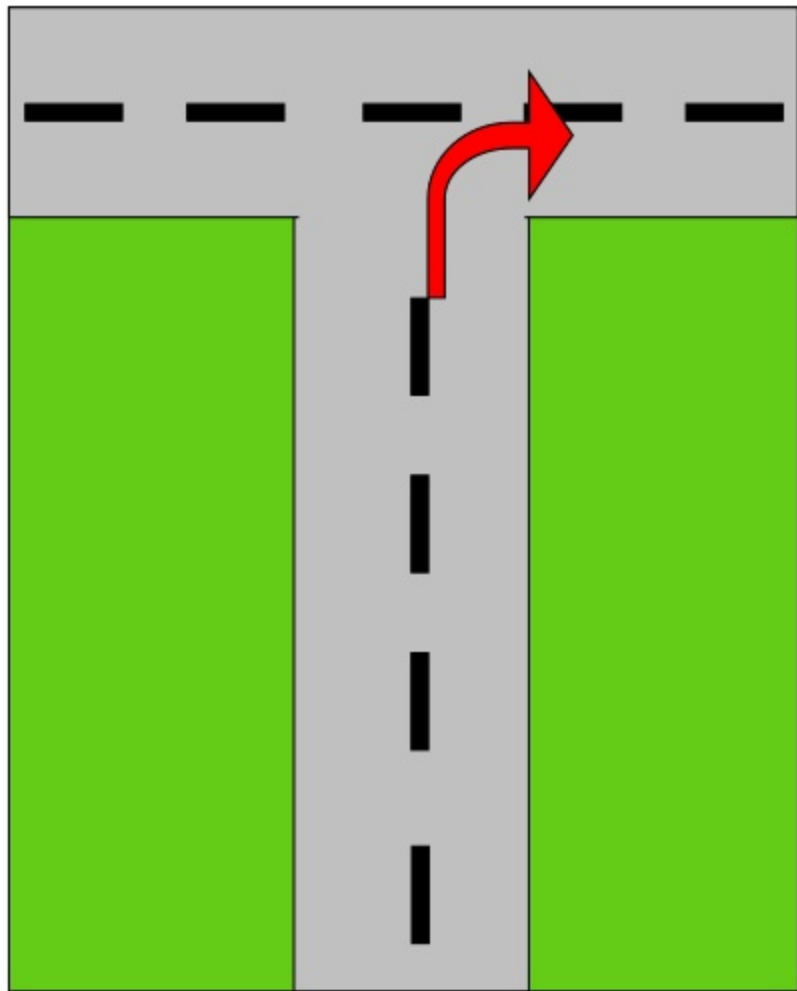


**Take the first  
corner on the right**

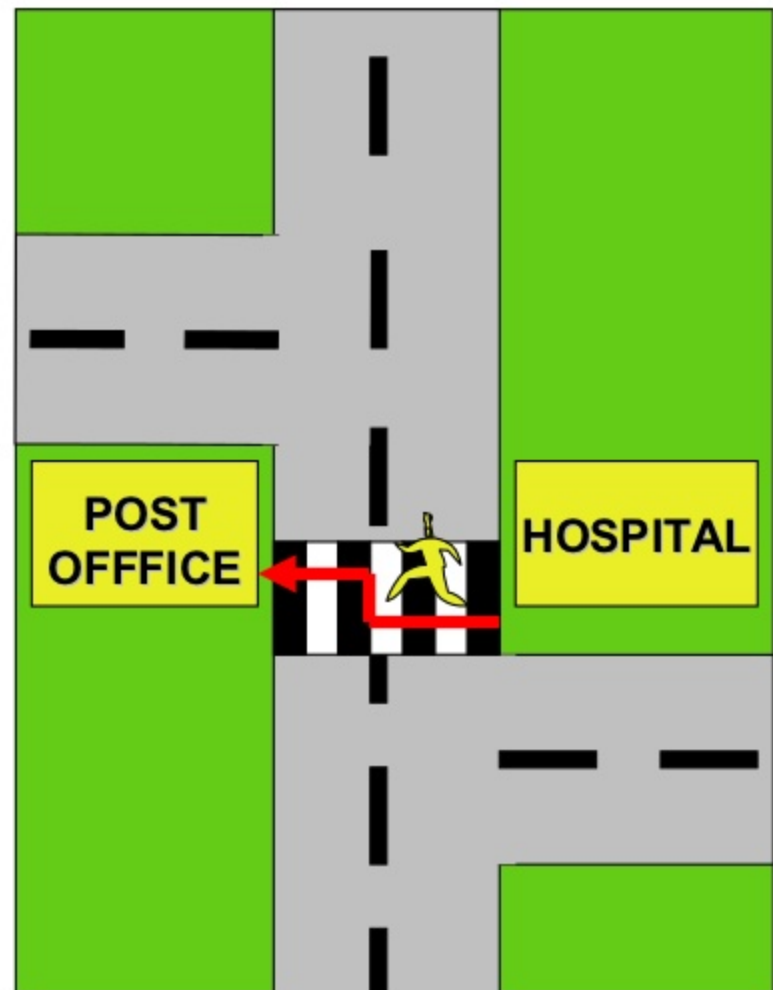


**Take the second  
corner on the right**

**Turn Right at  
the end** of the street

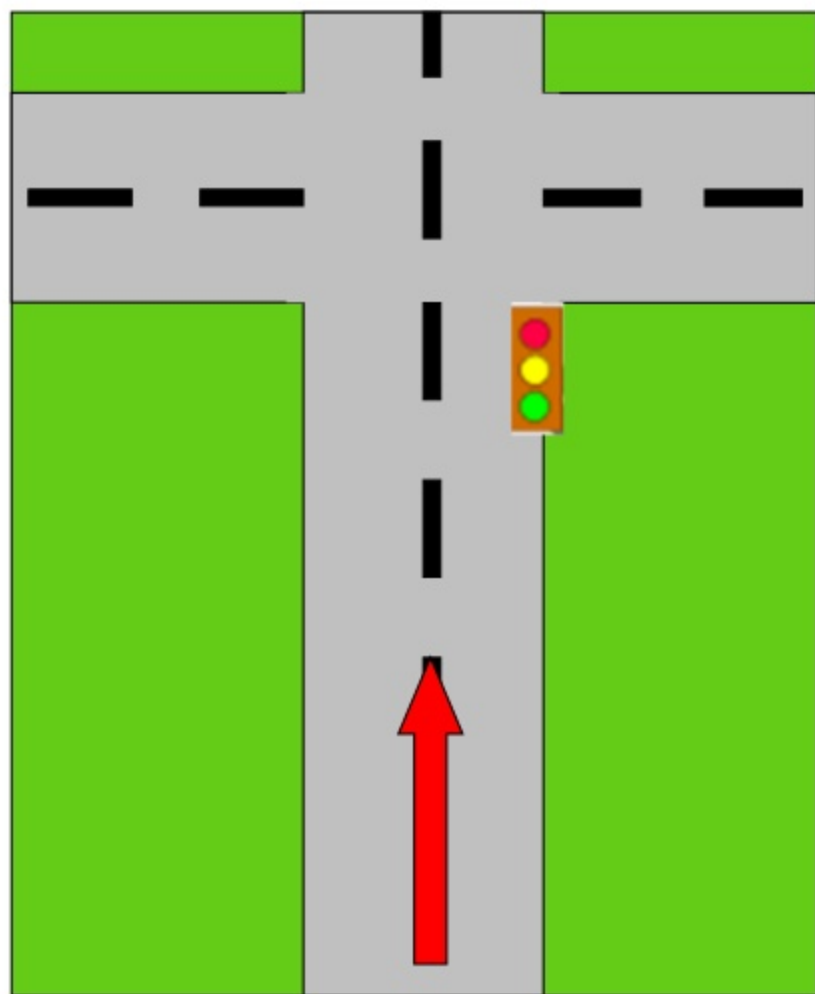


**Cross** the street



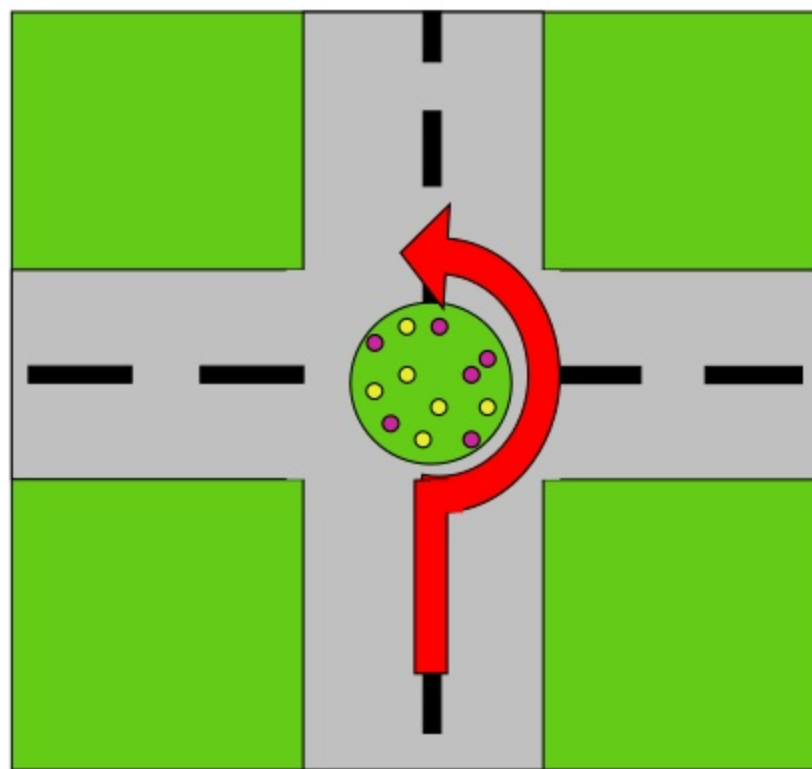


# Go to the Traffic Lights



Go straight until you  
come to the *traffic lights*

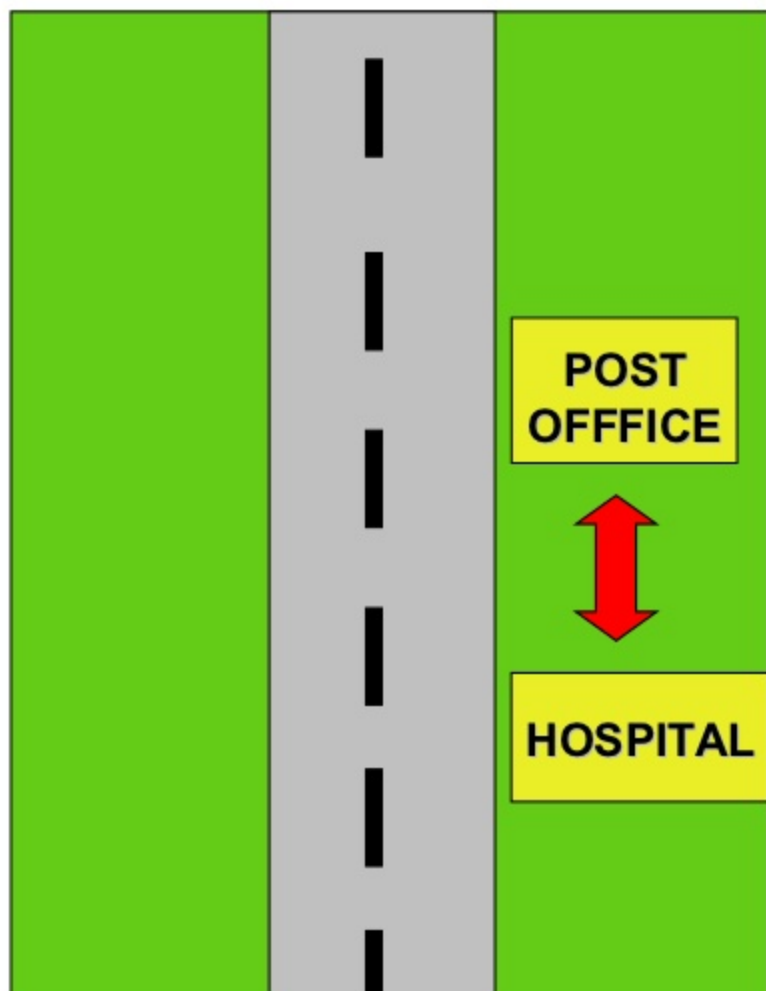
# Roundabout



Go straight until you  
come to a *roundabout*  
and turn left / take the  
third exit



The Hospital is  
**next to**  
the Post Office



The Post Office is  
**opposite**  
the Hospital

